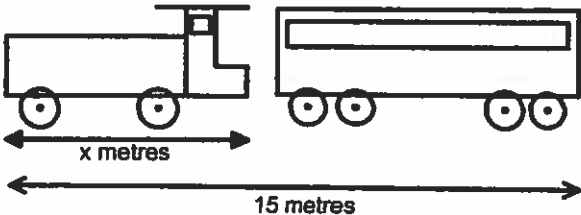

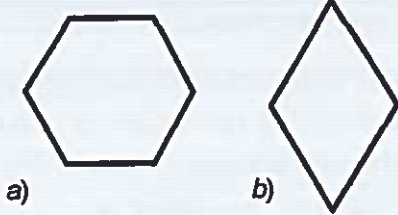


Marks

1. (a) Write quarter past eight in the evening in 24 hour time.
(b) Write 0025 in 12 hour time. 1,1
2. Find: (a) $\frac{3}{5}$ of £50 (b) 25% of 24kg 2,2
3. Write a fraction equivalent to $\frac{2}{3}$. 1
4. Write 9% as a fraction. 1
5. Find the value of x in the following equations:
(a) $x - 11 = 26$ (b) $20 \div x = 5$ 1,1
-
6. A Northlink ferry left Lerwick at 1730 on a stormy day and only arrived in Aberdeen at 1310 the next day. How long was the journey in hours and minutes? 2
7. The timetable shows part of the Lerwick Town bus service.
- | Town Service | | | |
|--------------|------|------|------|
| Quoys | 0820 | 1303 | 1708 |
| Sandveien | 0823 | 1306 | 1711 |
| Tesco | 0825 | 1308 | |
| Hospital | 0826 | 1309 | |
| Esplanade | 0828 | 1311 | |
- (a) How long does the 1303 bus from Quoys take to travel to the Esplanade? 1
(b) The 0820 from Quoys is 6 minutes late. When will it reach Tesco? 1
(c) Some of the times of the 1708 bus are missing. When will it reach the hospital? 1
8.  15 metres
- (a) A small train in a park is 15 metres long. The carriage is 3 metres longer than the engine. If the engine is x metres long, write an equation for the length of the whole train. 1
(b) Work out how long the engine is. 1
(c) Work out how long each carriage is. 1
9. Amy, Ben and Cara share a pizza. Amy ate 30%, Ben ate 38% and Cara ate the rest of it. What percentage of the pizza did Cara eat? 2
-
10. Calculate:
(a) 14.6×100 (b) $57.2 \div 100$ 1,1

11. Round: (a) 28 350 to the nearest 1000, 1
(b) 72.961 to 1 decimal place. 1
12. 1.27m is cut off an 3.5m length of wood. What length is left? 2
13. A driver buys 20 litres of petrol costing £1.58 for each litre. How much does the driver pay? 2
14. Calculate:
(a) $4 + 5 \times 6$ (b) $20 \div (6 - 2)$ 1,1
15. Write down the numbers the arrows are pointing to:
 1,1
16. Arrange the following numbers in order from smallest to largest. 0.432, 0.403, 0.3, 0.342, 0.423, 0.23 1
17. (a) Draw out a 10 squares by 10 squares co-ordinate diagram like this one and plot the points P(2,3) Q(2,9), & R(6,9). 1
 (b) Mark the position of point S if shape PQRS is a rectangle. 1
 (c) Write down the co-ordinates of point S. 1
18. Write down the number of lines of symmetry in each of the two regular shapes
 1,1
19. (a) One night the temperature fell from -5°C by 7°C . What did it reach? 1
 (b) The next day it rose to 4°C . By how many degrees had it risen? 1

S1 Test - March 2018

Marks

1. (a) 32×100

(b) $780000 \div 1000$

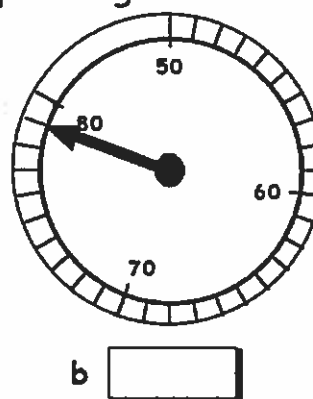
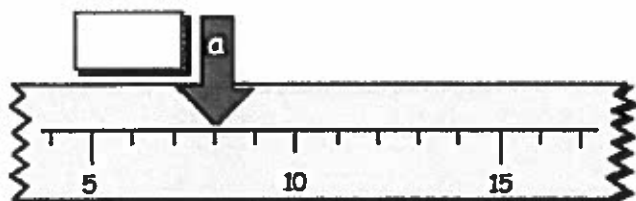
(c) 145×3

4

(d) $23800 \div 7$

2. What are the numbers that the arrows are pointing to?

1,1

b

3. Write in the missing words.

Saturday, , Monday, , Wednesday

1

March, , May, , July,

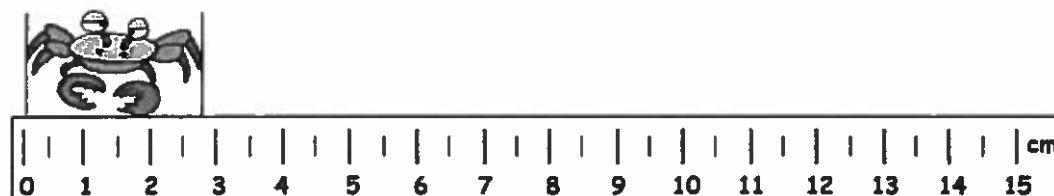
1

What day is 4 days before Friday?

1

4. Write the width of the crab to the nearest centimetre.

1

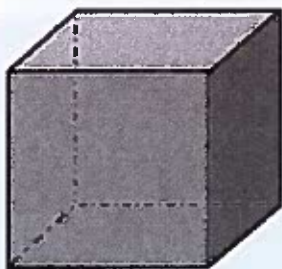
 cm

5. (a) $4.187 + 7.69$

(b) $11.6 - 5.18$

2,2

6. Name the 3D shapes.





2

7. Round 39652 to the nearest 100.

1

8. What coins should be used to pay for this cake exactly?



56p

2

9. Round 8.2975 to 2 decimal places.

1

10. Arrange the following numbers in order from **smallest to largest**.

(a) 2064, 2604, 2406, 2046, 2460, 2640

2

(b) 0.976, 0.967, 0.908, 0.89, 0.977, 0.807, 1.102

2

11. **Seventy two pence** can be written as :- **72p** or **£0.72**

Write these in 2 ways :-

twenty five pence =

2

one pound and thirty eight pence =

2

12. Write 1709 in 12 hour time.

2

13. Write quarter past seven in the morning in 24 hour time.

1

14. A comet was first seen at 2156 on January 8th and then at 0138 on January 10th.

2

How long was it between sightings? (Write your answer in hours and minutes).

15. A carton of juice holds 520 millilitres.
How many millilitres are in 10 cartons ?



1

16. Calculate: (a) 5% of £40

2,2

- (b) $\frac{2}{3}$ of 3.870kg

17. Express 8% as a fraction in its simplest form.

2

Total 40

1. Mentally calculate:

- (a) 3.04×10 (b) 48.79×100 (c) $1.6 \div 10$ (d) $72 \div 100$ (4)

2. Copy and complete the following sums:

(a)
$$\begin{array}{r} 52.50 \\ + 24.99 \\ \hline \end{array}$$

(b)
$$\begin{array}{r} 50.5 \\ - 36.85 \\ \hline \end{array}$$

(3)

3. Calculate the answer to the following:

(a) 5.64×8

(b) $7 \overline{)19.46}$ (2)

4. A car rally has three stages to be completed.
The table shows the distances involved.

Stage 1	53.71 km
Stage 2	9.05 km
Stage 3	31.66 km

Calculate the total distance for all 3 stages. (3)

5. Ashley organised an event for Children in Need.

Altogether, the school raised £86.50.
The Infant Department raised £32.75.

How much money did the rest of the school raise? (3)

6. Mr. Smith bought 5 shrubs for his garden. The total cost of the shrubs was £69.90.
If they each cost the same amount how much did one shrub cost? (3)

7. Calculate (a) $4 + 5 \times 2$ (b) $18 - 15 \div 3$ (2)

8. Write the following temperatures in order coldest first:

-4, -15, 0, 3, and -5 degrees Celsius. (2)

9. Write down 3 equivalent fractions to $\frac{1}{2}$. (3)

10. Sally gives a £20 note at the checkout to pay for food costing £12.92.

How much change does she get? (3)

11. In a cafe you order

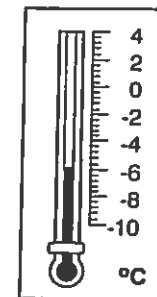
2 cups of coffee at £1.20 each

2 scones at 75p each

4 butters at 20p each

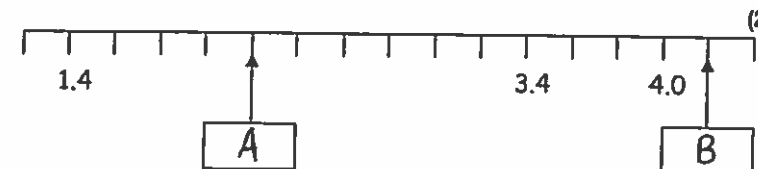
How much do you pay for all of this? (4)

12. What is the reading on this thermometer?



(2)

13. What values do the arrows A and B point to; (2)



1. Mentally calculate:

- (a) 3.04×10 (b) 48.79×100 (c) $1.6 \div 10$ (d) $72 \div 100$ (4)

2. Copy and complete the following sums:

(a)
$$\begin{array}{r} 52.50 \\ + 24.99 \\ \hline \end{array}$$

(b)
$$\begin{array}{r} 50.5 \\ - 36.85 \\ \hline \end{array}$$

(3)

3. Calculate the answer to the following:

(a) 5.64×8

(b) $7 \overline{) 19.46}$ (2)

4. A car rally has three stages to be completed.
The table shows the distances involved.

Stage 1	53.71 km
Stage 2	9.05 km
Stage 3	31.66 km

Calculate the total distance for all 3 stages. (3)

5. Ashley organised an event for Children in Need.

Altogether, the school raised £86.50.
The Infant Department raised £32.75.

How much money did the rest of the school raise? (3)

6. Mr. Smith bought 5 shrubs for his garden. The total cost of the shrubs was £69.90.
If they each cost the same amount how much did one shrub cost? (3)

7. Calculate (a) $4 + 5 \times 2$ (b) $18 - 15 \div 3$ (2)

8. Write the following temperatures in order coldest first:

-4, -15, 0, 3, and -5 degrees Celsius. (2)

9. Write down 3 equivalent fractions to $\frac{1}{2}$. (3)

10. Sally gives a £20 note at the checkout to pay for food costing £12.92.

How much change does she get? (3)

11. In a cafe you order

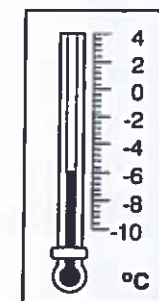
2 cups of coffee at £1.20 each

2 scones at 75p each

4 butters at 20p each

How much do you pay for all of this? (4)

12. What is the reading on this thermometer?



(2)

13. What values do the arrows A and B point to; (2)

